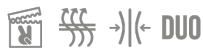


## ESTAMBUL WOMAN SU1033



### DESCRIPTION

Women's long-sleeve technical raglan slim-fit sweatshirt. Collar with a half zip inverted design featuring a reflective band. Reinforced seam covers. Cuffs with thumb openings. Reflective details on the back. Back hem slightly longer than the front. Warm brushed inner fabric.

### COMPOSITION

88% Recycled polyester/ 12% Elastane, 200 gsm

### REMARKS

\*Removable label.

### SIZES

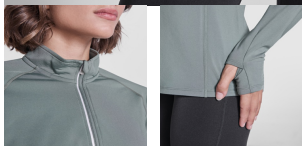
Adults:: S · M · L · XL · 2XL / :

### SCHEME



### QUANTITIES

	Box	Pack
Adults:	30 un.	1 un.



### COLORS



### PRINTING TECHNIQUES AVAILABLE



Heat transfer printing

### SIZES

Adults:	S	M	L	XL	2XL
WIDTH (A)	45cm	48cm	51cm	54cm	57cm
LONG (B)	63cm	64cm	65cm	66cm	67cm

\*[Measured from the edge 1 cm below the sleeves / Measured from the highest point of the shoulder to the end of the garment]

