

BELICE CA6532



DESCRIPTION

Fitted t-shirt with crew neck and v-opening on front. Trimmed half-sleeve and side seams.

COMPOSITION

94% combed cotton / 6% elastane, single jersey, 200 gsm.

REMARKS

* XXXL size available in white 01 and black 02. * High quality fabric for a soft and pleasant touch. * Removable label.

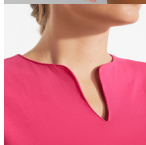
SIZES

Adults:: S · M · L · XL · 2XL · 3XL / :

QUANTITIES

Box	Pack
-----	------

Adults: 50 un. 50 un.



COLORS

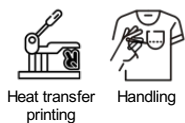


SIZES

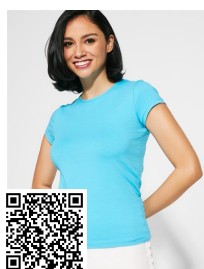
Adults:	S	M	L	XL	2XL	3XL
WIDTH (A)	40cm	43cm	46cm	49cm	53cm	56cm
LONG (B)	59cm	61cm	63cm	65cm	67cm	68cm

*[Measured from the edge 1 cm below the sleeves / Measured from the highest point of the shoulder to the end of the garment]

PRINTING TECHNIQUES AVAILABLE



RELATED MODELS



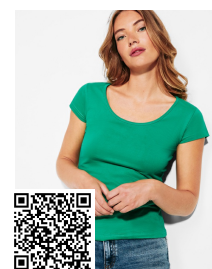
BALI CA6597



JAMAICA CA6627



VICTORIA CA6646



GUADALUPE CA6647